

SCOPE GTL 8000 REEL USER MANUAL



Your new Nash product has a 12 month manufacturer warranty as standard. To extend this warranty to 24 months please visit the Nash website and register your new product here:
www.nashtackle.com/register

(FR)

Votre nouveau produit Nash a une période de garantie de 12 mois d'origine. Pour étendre cette période de garantie à 24 mois, merci de visiter notre site internet, et enregistrer votre produit sur le lien suivant: **www.nashtackle.com/register**

(IT)

Il tuo nuovo prodotto Nash ha 12 mesi di garanzia da problemi di fabbricazione. Per estendere la garanzia a 24 mesi si prega di consultare il sito internet Nash e registrare il tuo nuovo prodotto qui: **www.nashtackle.com/register**

(DE)

Ihr neues Nash-Produkt hat als Standard eine 12-monatige Herstellergarantie. Um diese Garantie auf 2 Jahre auszuweiten, besuchen Sie bitte die Nash Webseite und registrieren das Produkt hier: **www.nashtackle.com/register**

(NL)

Je nieuwe Nash product heeft standaard een fabrieksgarantie van 12 maanden. Indien je deze wil verlengen naar 24 maanden, bezoek dan de Nash website en registreer je nieuwe product hier: **www.nashtackle.com/register**

(PL)

Twój nowy produkt Nash jest objęty standardową, 12-miesięczną gwarancją producenta. Aby rozszerzyć gwarancję do 24 miesięcy, odwiedź naszą stronę internetową i zarejestruj nowy produkt: **www.nashtackle.com/register**

(CZ)

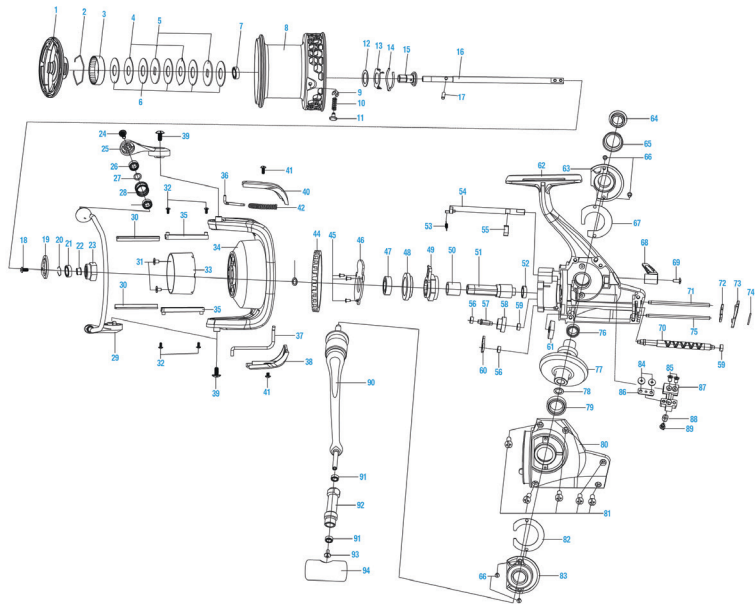
Váš nový produkt Nash má standardní záruku od výrobce 12 měsíců. Chcete-li tuto záruku prodloužit na 24 měsíců, navštivte webové stránky společnosti Nash a zaregistrujte svůj nový produkt tady: **www.nashtackle.com/register**

(HU)

Az új Nash terméké 12 hónap gyártói garanciával rendelkezik alapesetben. Ennek a garanciának a 24 hónapra történő meghosszabbításához látogasson el a Nash weboldalára és regisztrálja termékét itt: **www.nashtackle.com/register**

(ES)

Su nuevo producto Nash tiene una garantía de fábrica de 12 meses. Para ampliar esta garantía a 24 meses, visite nuestra página web de Nash y registre su nuevo producto: **www.nashtackle.com/register**

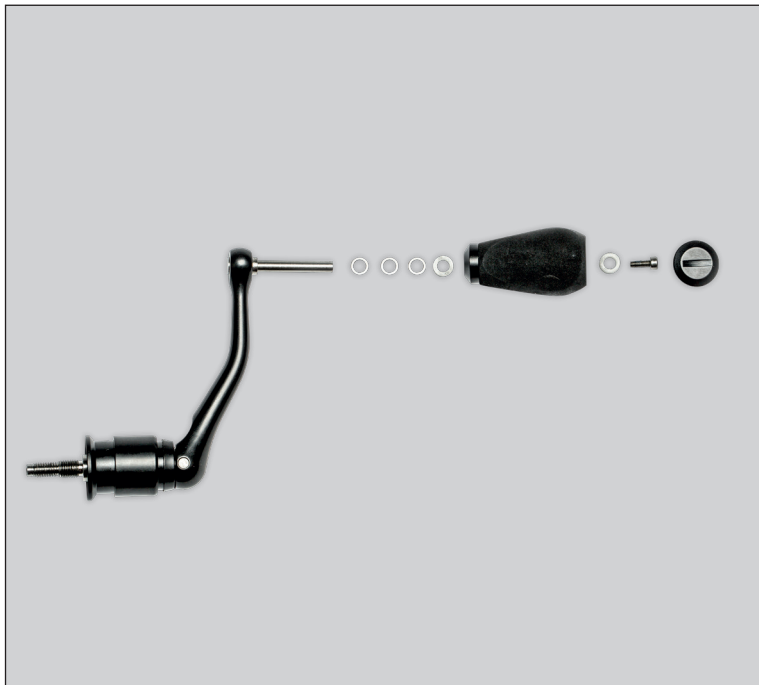


SCOPE GTL 8000 REEL DIAGRAM

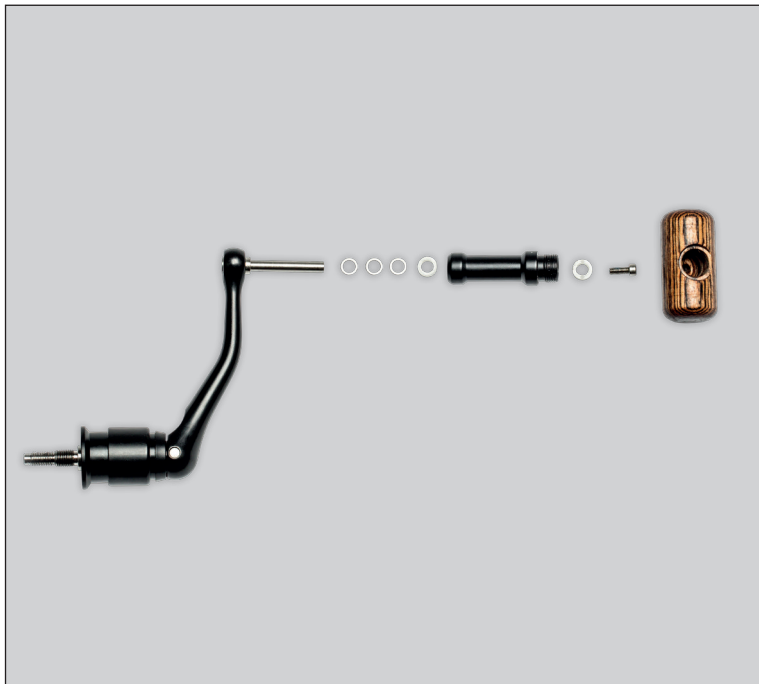


- | | | | |
|------------------------------|-------------------------------|-------------------------|-------------------------------|
| 1. Drag knob assy | 28. Line roller | 56. Ball bearing | 85. Screw |
| 2. Drag washer retainer | 29. Bail assembe | 57. Slow O/S gear pin | 86. Slider retainer plate |
| 3. Drag knob click plate | 30. Line guard | 58. Slow O/S gear | 87. Oscillation slider |
| 4. Eared washer | 31. Screw | 59. Bushing | 88. Oscillation slide bushing |
| 5. Key washer | 32. Screw | 60. Top retainer plate | 89. Guide claw |
| 6. Drag washer | 33. Rotor bushing | 61. Oscillation gear | 90. Handle assy |
| 7. Ball bearing | 34. Rotor | 62. Body | 91. Bushing |
| 8. Spool | 35. Line guard plate | 63. Decorating ring A | 92. Handle knob bushing |
| 9. Snap ring | 36. Bail spring shaft | 64. Handle cap | 93. Screw |
| 10. Spring | 37. Kick level | 65. Handle cap cover | 94. Handle knob |
| 11. Line clip | 38. Rotor cover-B | 66. Screw | |
| 12. Adjusting washer-A | 39. Screw | 67. Carbon ring A | |
| 13. Click leaf spring holder | 40. Rotor cover-A | 68. Anti-reverse level | |
| 14. Click leaf spring | 41. Screw | 69. Screw | |
| 15. Shaft drag adapter | 42. Bail spring | 70. Worm shaft | |
| 16. Main shaft | 43. Adjusting washer-B | 71. Guide shaft A | |
| 17. Pin | 44. Rotor brake | 72. Rear retainer plate | |
| 18. Screw | 45. Screw | 73. Cap | |
| 19. Lock plate | 46. Roller cover | 74. Labels | |
| 20. Ball bearing retainer | 47. Ball bearing | 75. Guide shaft B | |
| 21. Ball bearing | 48. Roller room | 76. Ball bearing | |
| 22. Bushing | 49. Roller | 77. Drive gear assy | |
| 23. Rotor nut | 50. Roller inner bushing | 78. Washer | |
| 24. Screw | 51. Pinion gear | 79. Ball bearing | |
| 25. Bail arm | 52. Ball bearing | 80. Body cover | |
| 26. Ball bearing | 53. Spring | 81. Screw | |
| 27. Washer | 54. Anti-reverse shaft | 82. Carbon ring B | |
| | 55. Anti-reverse level spring | 83. Decorating ring B | |
| | | 84. Screw | |

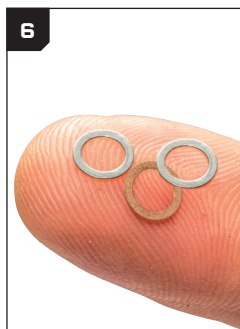
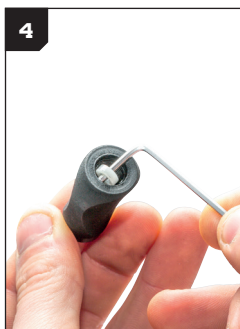
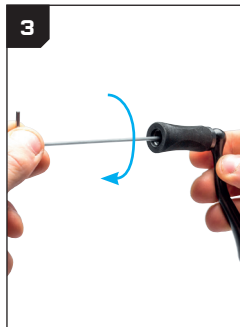
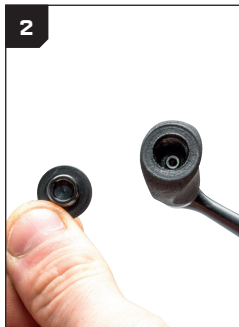
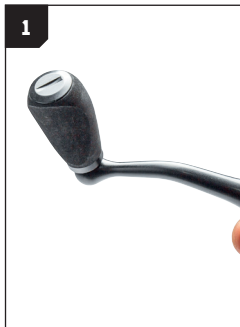
COMPLETE ASSEMBLY FOR EVA HANDLE



COMPLETE ASSEMBLY FOR WOODEN HANDLE



HOW TO CHANGE YOUR HANDLE





7



8



9



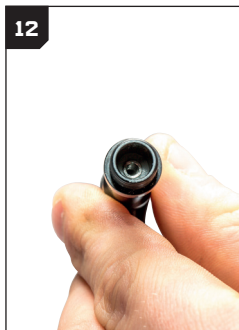
10



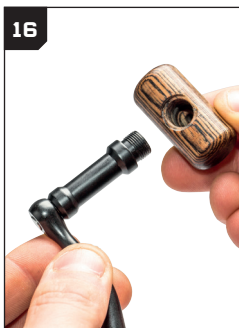
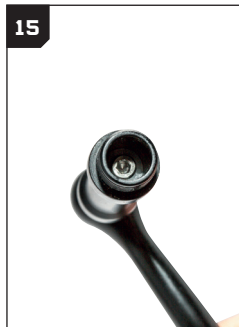
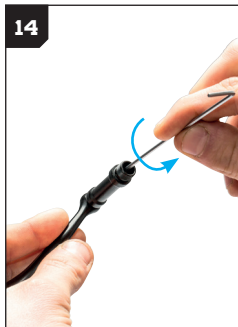
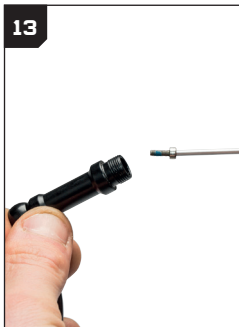
11



12



HOW TO CHANGE YOUR HANDLE







**Kevin Nash Group Limited
Units 18-21 Burnham Business Park
Burnham-on-Crouch, Essex CM0 8TE**

**Dystrybutor: Nash Tackle Sp. z o.o UL.
Magazynowa 9, 44-244 Żory, Polska
VAT EU: PI6423203392**

WWW.NASHTACKLE.COM